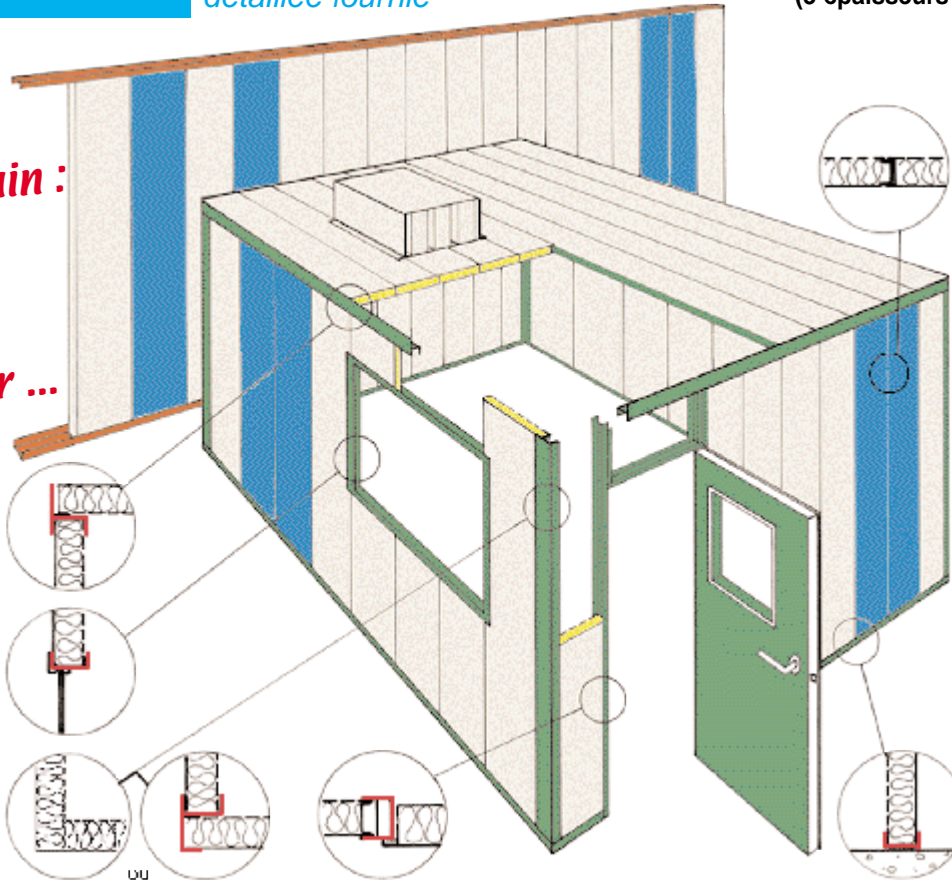


MONTAGE FACILE

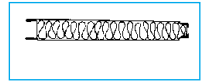
Notice de montage
détaillée fournie

*Clé en main :
posé ou
en kit
à monter ...*

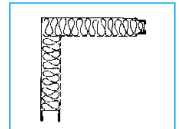


2 modules de panneaux (3 épaisseurs : 50 - 80 - 100mm)

Panneau plan

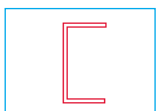


Panneau
d'angle

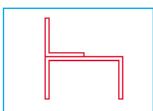


3 modèles de lisses :

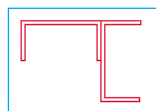
Lisse standard



Lisse haute

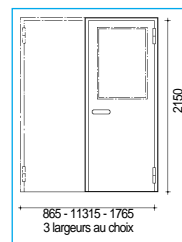


Lisse d'angle

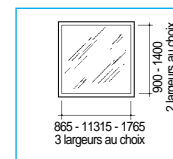


3 modèles d'accessoires :

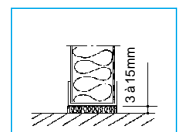
Module porte



Module vitré



Joint de sol



Faites le vous-même!

